

UNCONTROLLED DOCUMENT

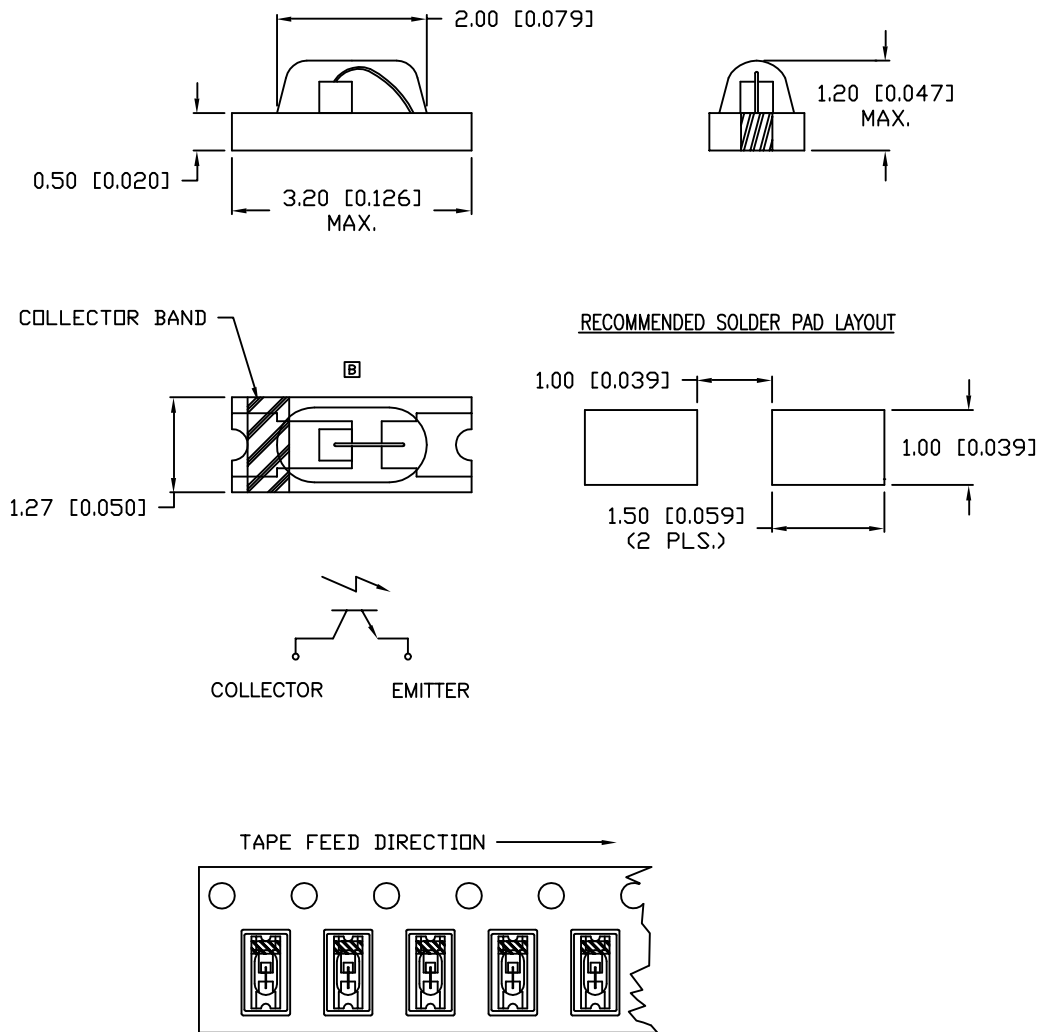
PART NUMBER		REV.
OED-ST-44F		D
REV.	E.C.N. NUMBER AND REVISION COMMENTS	DATE
A	E.C.N. #10BRDR. & REDRAWN.	1.5.95
B	E.C.N. #10434.	6.3.98
C	E.C.N. #10936. & #10BRDR	12.11.02
D	E.C.N. #E11062	12.3.03

ELECTRO-OPTICAL CHARACTERISTICS $T_A=25^\circ\text{C}$ $I_f=20\text{mA}$

PARAMETER	MIN	TYP	MAX	UNITS	TEST COND
COLLECTOR DARK CURRENT			400	nA	$V_{ce} = 10\text{V}$ $E_e = 0 \text{ mw/cm}^2$
COLLECTOR LIGHT CURRENT		3.0		mA	$V_{ce} = 5\text{V}$ $E_v=1000\text{LUX}$
COLLECTOR-EMITTER SATURATION VOLTAGE			0.3	V	$I_c=1\text{mA}$ $E_v=1000\text{LUX}$
SWITCHING SPEEDS:					$V_{ce}=5\text{V}$ $I_c=1\text{mA}$ $R_l = 1000 \Omega$
RISING TIME		10		μS	
FALLING TIME		10		μS	
PEAK WAVELENGTH SENSITIVITY		850		nm	
LENS COLOR:	WATER CLEAR				

LIMITS OF SAFE OPERATION AT 25°C

PARAMETER	MAX	UNITS
COLLECTOR-EMITTER VOLTAGE (V_{ce0})	70	V
EMITTER-COLLECTOR VOLTAGE (V_{ce0})	5	mA
COLLECTOR CURRENT	100	mA
POWER DISSIPATION	200	mW
OPERATING TEMP.	-25 TO +85	$^\circ\text{C}$
STORAGE TEMP.	-25 TO +120	$^\circ\text{C}$



*UNLESS OTHERWISE SPECIFIED TOLERANCES PER DECIMAL PRECISION ARE: X=±1 (±0.039), X.X=±0.5 (±0.020), X.XX=±0.25 (±0.010), X.XXX=±0.127 (±0.005). LEAD SIZE=±0.05 (0.002), LEAD LENGTH=±0.75 (±0.030). MIN= $\frac{+DECIMAL PRECISION}{-0.00}$ MAX= $\frac{+0.00}{-DECIMAL PRECISION}$

UNCONTROLLED DOCUMENT

REV.	PART NUMBER
D	OED-ST-44F
CERAMIC CHIP, SURFACE MOUNT PHOTOTRANSISTOR, WATER CLEAR LENS, TAPE AND REEL.	

CONFIDENTIAL INFORMATION
THE INFORMATION CONTAINED IN THIS DOCUMENT IS THE PROPERTY OF LUMEX INC. EXCEPT AS SPECIFICALLY AUTHORIZED IN WRITING BY LUMEX INC., THE HOLDER OF THIS DOCUMENT SHALL KEEP ALL INFORMATION CONTAINED HEREIN CONFIDENTIAL AND SHALL PROTECT SAME IN WHOLE OR IN PART FROM DISCLOSURE AND DISSEMINATION TO ALL THIRD PARTIES.

RELIABILITY NOTE
OUR MANY YEARS OF EXPERIENCE DATA ACCUMULATION INDICATE THAT SOLDER HEAT IS A MAJOR CAUSE OF EARLY AND FUTURE FAILURE. PLEASE PAY ATTENTION TO YOUR SOLDERING PROCESS.

290 E. HELEN ROAD
PALATINE, IL 60067-6976
PHONE: +1.847.359.2790
US WEB: www.lumex.com
TW WEB: www.lumex.com.tw

DRAWN BY:	CHECKED BY:	APPROVED BY:	DATE:
CT			12.11.02
			PAGE: 1 OF 1
			SCALE: N/A